



# GLOBAL TOWER

UDDAINI - SAMPATCHAK ROAD , PATNA

Best Place to Invest ! Perfect Place to Live!



RERA Reg :- BRERAP00208-004/69/R-1589/2023

**LAKSHYA BHARTI GLOBAL INFRA CORPORATION LTD.**

CIN - U70101BR2013PLC019917

<https://www.lakshyaglobal.com>

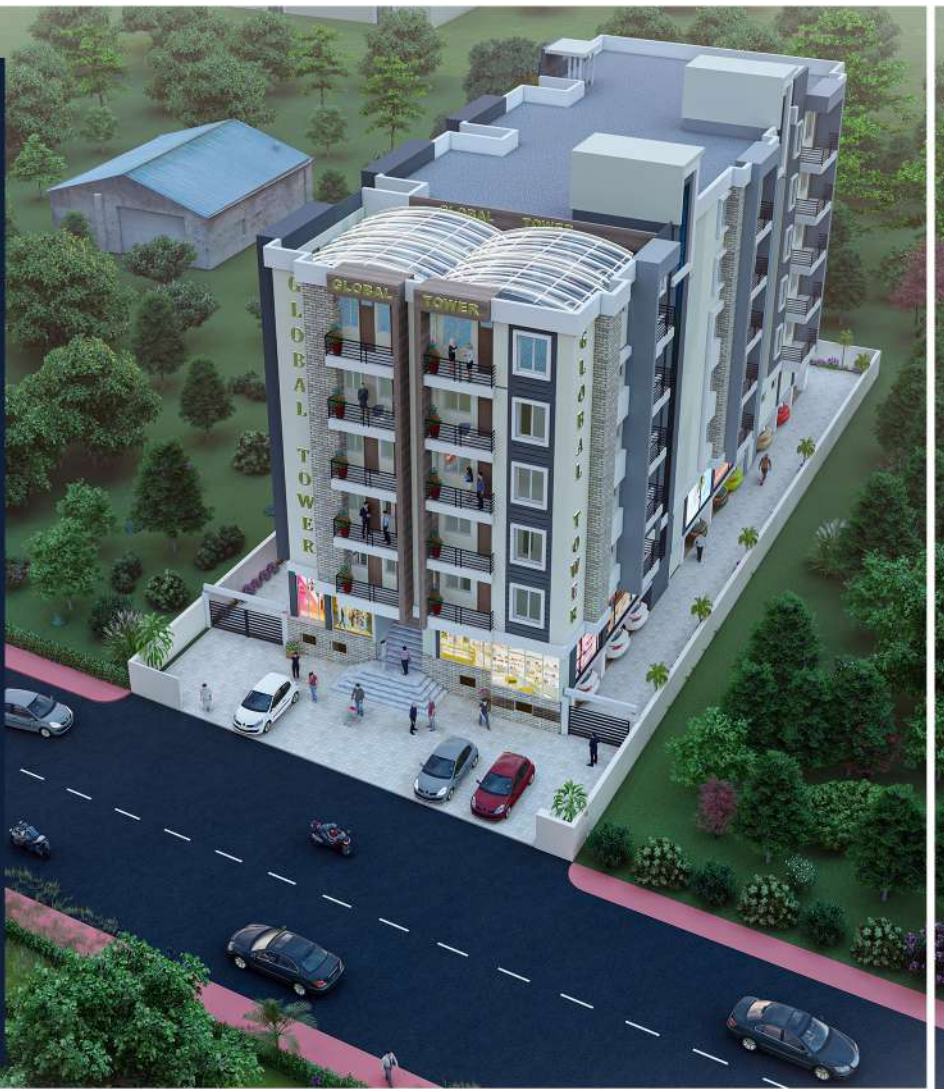




**SUCCESS** is  
measured with  
quality of life.

Quality of life is  
measured by  
quality of your  
**HOME.**

Get your  
Dream Home  
within standard  
budget in  
PATNA'S most  
futuristic location  
SAMPATCHAK.





# Welcome to GLOBAL TOWER!



- ✓ A well - designed luxurious apartment.
- ✓ A gated community with 3 - tier security system.
- ✓ Ground level convenient parking.
- ✓ Condominium living with customised services.
- ✓ An opportunity to be part of GLOBAL CLUB\*.



GLOBAL TOWER is perfect for those looking for a home within the city but also wants to enjoy the tranquility of nature.



**SPACE**

**NATURE**

**TRANQUILITY**

- Patna - Gaya - SH1,
- Patna-Bakhtiyapur-  
Bhagalpur - NH 31,
- Patna - Chapra - NH 19,
- Patna - Gaya - Dobhi - NH 83.
- In the vicinity of Inter State Bus Terminus (ISBT) and Metro Depo for effortless commuting.







SUSTAINABILITY



LUXURY LIVING



DONE RESPONSIBLY

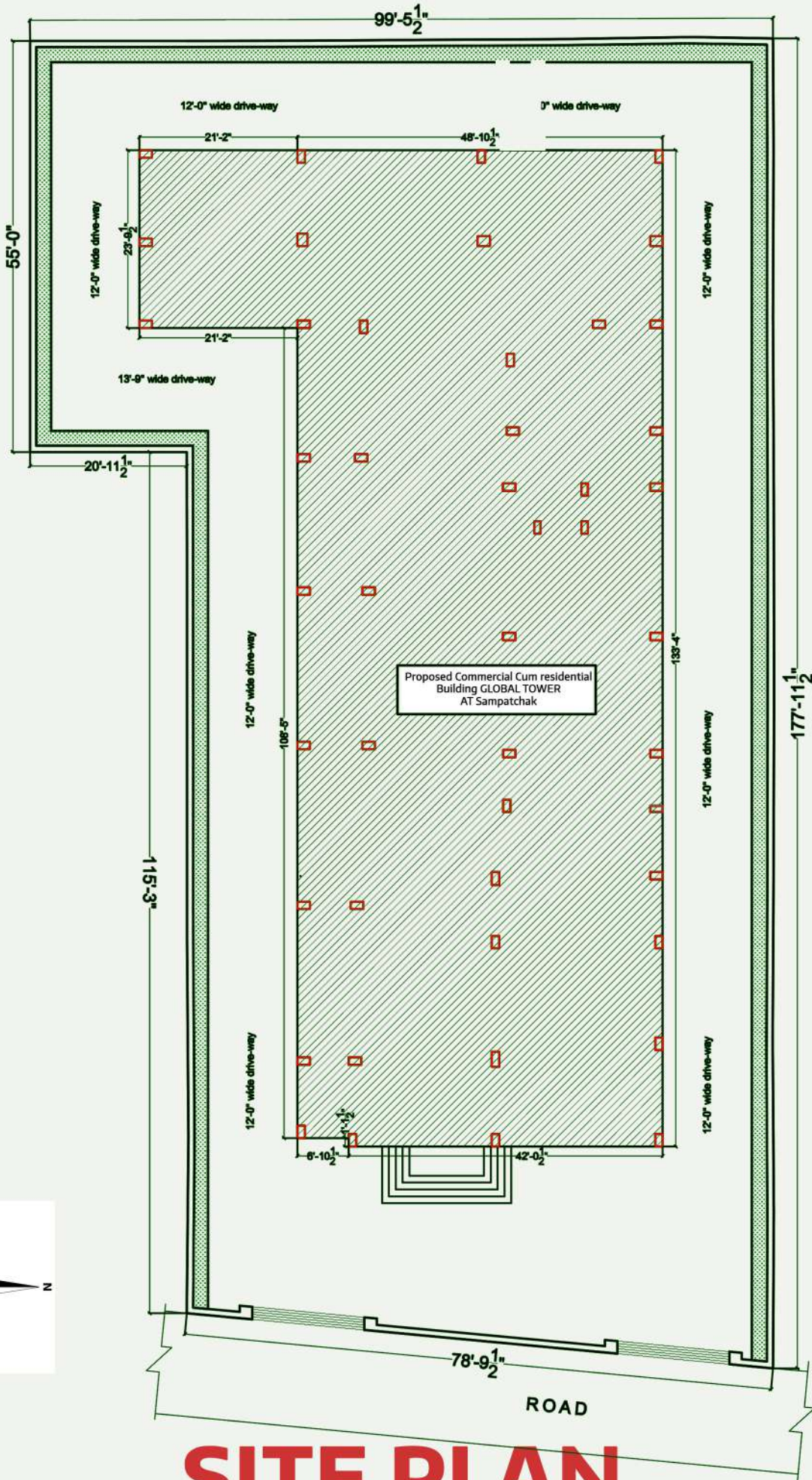


GLOBAL TOWER has been conceptualised designed as a sustainable alternative to conventional urban luxurious aspirational living. In addition to higher proportionate open area, much thought has gone into building an environmentally responsible community.

Conscious efforts are made everyday to prevent energy waste. Towards this goal provisions for energy efficient lighting in common areas, double glazed windows in every apartment, solar water heater and EV charging are made.

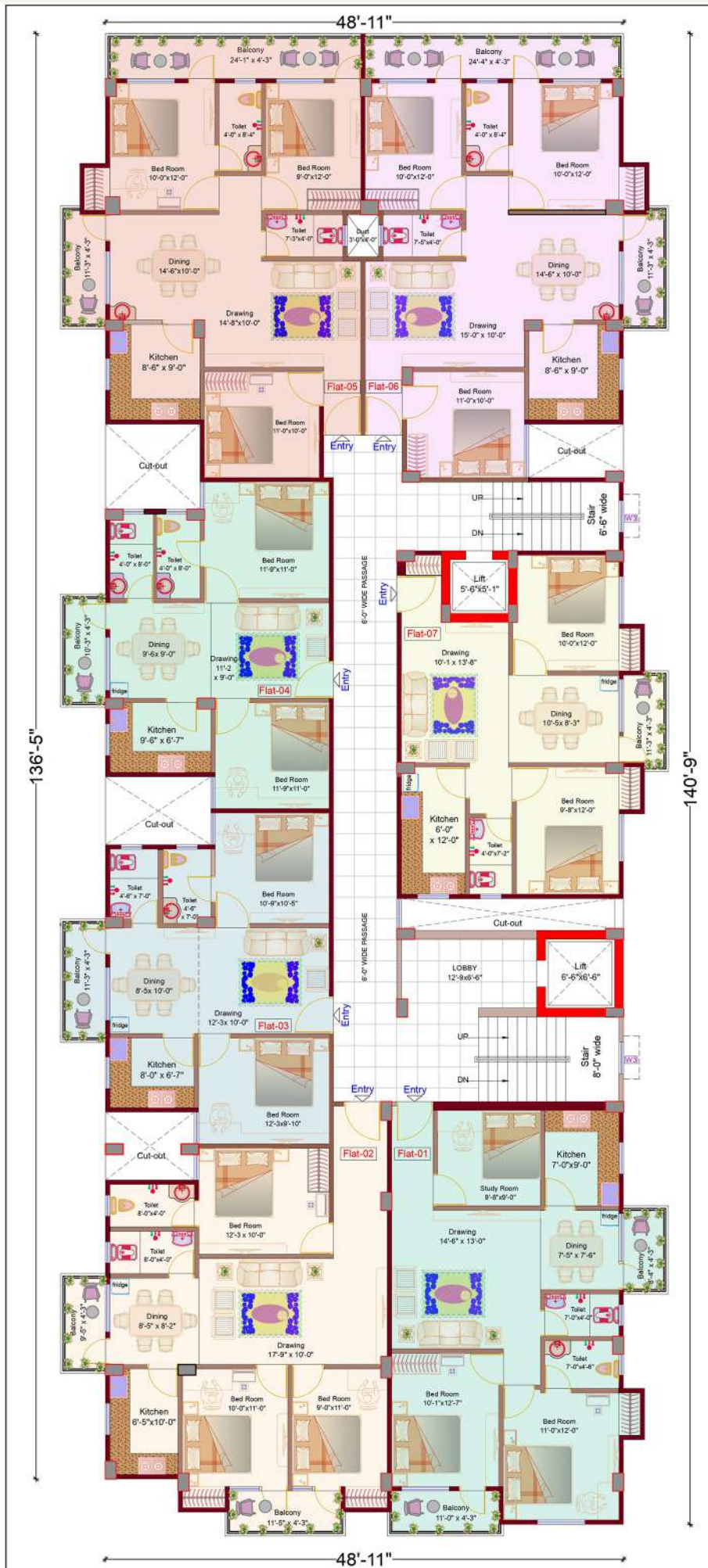
“LAKSHYA GLOBAL is fully committed to water conservation by rain water harvesting and roadside plantation in its community”.





# SITE PLAN





# TYPICAL FLOOR PLAN

# Flat No. 1 EMERALD 1303



Flat no.	TYPE	B/u area	Carpet Area	Balcony Area
01	3BHK	930.92 sqft.	805.16 sqft.	79.68 sqft.





# Flat No. 2 EMERALD 1353



Flat no.	TYPE	B/u area	Carpet Area	Balcony Area
02	3BHK	966.24 sqft.	822.44 sqft.	86.62 sqft.

**ENTRY**





# Flat No. 3 PEARL 932



Flat no.	TYPE	B/u area	Carpet Area	Balcony Area
03	2BHK	665.92 sqft.	583.60 sqft.	49.44 sqft.





# Flat No. 4 PEARL 918



Flat No.	TYPE	B/u area	Carpet Area	Balcony Area
04	2BHK	655.35	575.42 sqft.	43.33 sqft.





# Flat No. 5 DIAMOND 1419



Flat no.	TYPE	B/u area	Carpet Area	Balcony Area
05	3BHK	1013.40 sqft.	814.95 sqft.	149.76 sqft.





# Flat No. 6 DIAMOND 1437



Flat no.	TYPE	B/u area	Carpet Area	Balcony Area
06	3BHK	1026.14 sqft.	822.38 sqft.	151.66 sqft.



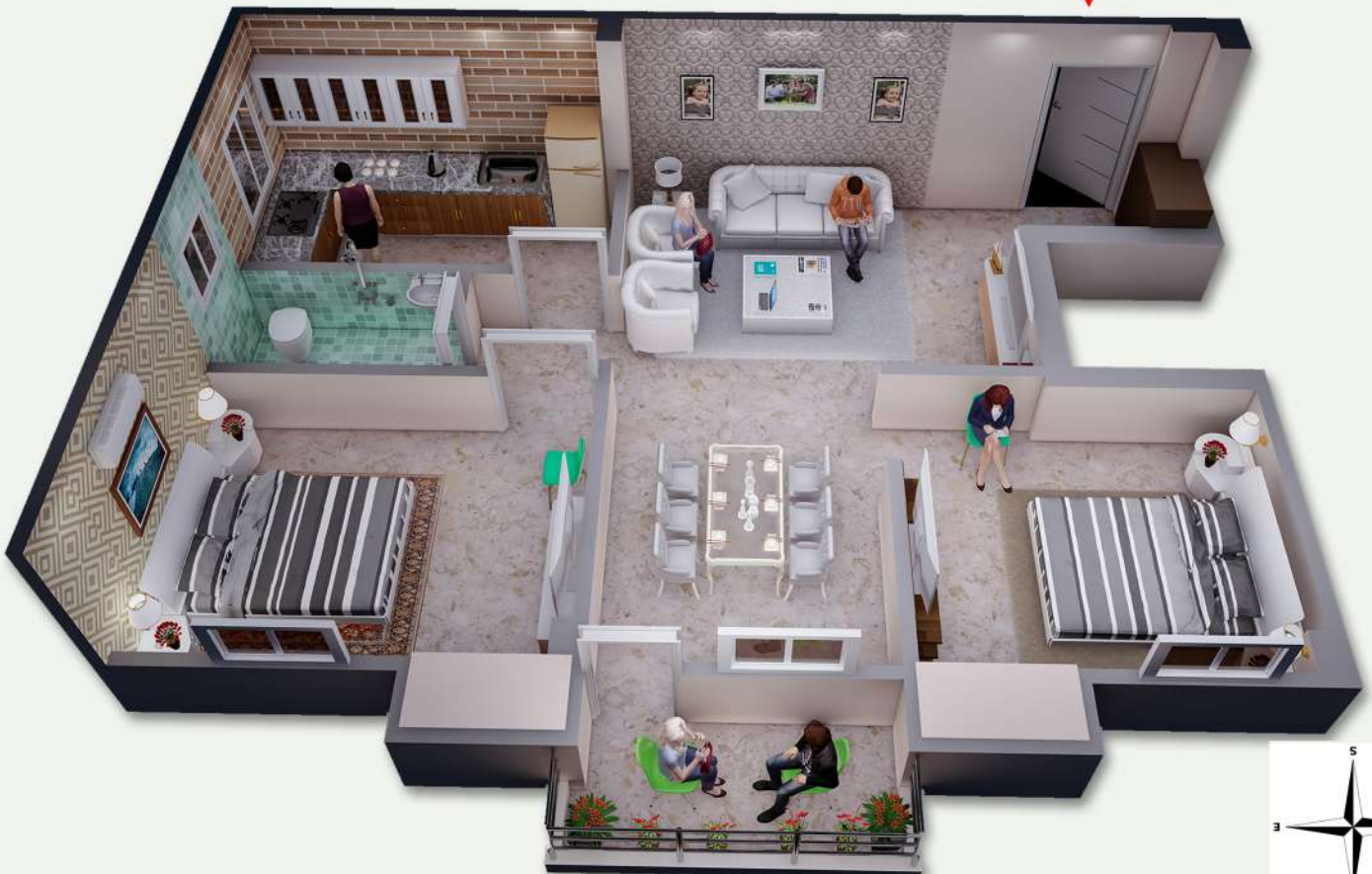


# Flat No. 7 SAPHIRE 989



Flat no.	TYPE	B/u area	Carpet Area	Balcony Area
07	2BHK	706.31 sqft.	624.60 sqft.	37.19 sqft.

**ENTRY** ↓







## **SPECIFICATIONS**

**Structure:-** Earthquake resistant RCC frame Structure

**Walls:-** Light weight bricks with plaster

**Lift:-** Two lifts of suitable size and capacity

**Apartment Flooring:-** Vitrified tiles in bedroom and hall. Ceramics / vitrified tiles in balconies. Antiskid tiles in bathroom.

**Kitchen:-** Ceramic / vitrified tiles flooring. Granite / marble on platform. Digital tiles 2 ft. above platform. Provisions for geyser, refrigerator and induction.

**Toilets and Fittings:-** Indian style common toilet. Western commode in master bedroom toilet. Provisions for geysers in all toilets. Branded CP accessories.

**Doors & Windows:-** Wooden / cement / metallic chokhat frame. Laminated / painted flush door. Aluminium / metallic frames for window with glass / fibre. Provisions for mosquito mesh shutter.

**Painting:-** Cement / weathercoat for the exterior wall. Emulsion for internal walls & ceilings.

**Electrical:-** Concealed wiring with PVC insulated copper wire. Sufficient power outlets and light points provided. Branded switches.

**DG Backup:-** For all common services.

### **Items at Additional Costs**

Any items or brands of choice as per actual cost.

Extra parking

Solar panels





More than 52%  
Open Area



3 Tier Security System



Multipurpose Hall



Open Yoga Space  
on Terrace

## AMENITIES & FACILITIES



Indoor  
Games Facility



Convenience  
Shops



Dedicated Parking  
& Multiple Parking  
Space Availability



EV Charging  
Points

## Home Loan Facilities







## Payment Schedule

Total Cost of the Flat /Unit	₹00,00,000 (Rs. .... Only	
At the Time of Booking	10% of Unit Cost	0,00,000
At the time of Agreement	15% of Unit Cost	0,00,000
At Start of Ground Level	15% of Unit Cost	0,00,000
Start First Floor Level	15% of Unit Cost	0,00,000
Start Second Floor Level	15% of Unit Cost	0,00,000
Start Third Floor Level	10% of Unit Cost	0,00,000
Start Fourth Floor Level	5% of Unit Cost	0,00,000
Start Fifth Floor Level	5% of Unit Cost	0, 00,000
Start Sixth Floor Level	5% of Unit Cost	0, 00,000
After getting OC	5% of Unit Cost	0, 00,000
<b>Total Price</b>	<b>100%</b>	<b>00,00,000</b>





## **GLOBAL TOWER** - *The Best Choice*

- ✔ Construction plot owned by the company.
- ✔ History of quality construction and timely delivery.
- ✔ Intellectual and High Networth Society.
- ✔ In - campus convenience shop.
- ✔ In - campus creche, learning and coaching centres.
- ✔ 24 X 7 services of house assistants, electrician, plumber, driver etc.
- ✔ Quality Living - Work Life Balance.
- ✔ Fast growing - upcoming Location.




# Global Tower



An Amazing  
**Place**  
to Own Pride!

**LAKSHYA BHARTI GLOBAL INFRA CORPORATION LTD.**

 **Global Tower Booking Office :-**  
B/87, Housing Colony,  
Kankarbagh, Patna 800020  
(Behind Panch Shiv Sai Mandir )

 **Contact us :-**  
**8252020647, 8083555002**



SCAN ME FOR OFFICE LOCATION

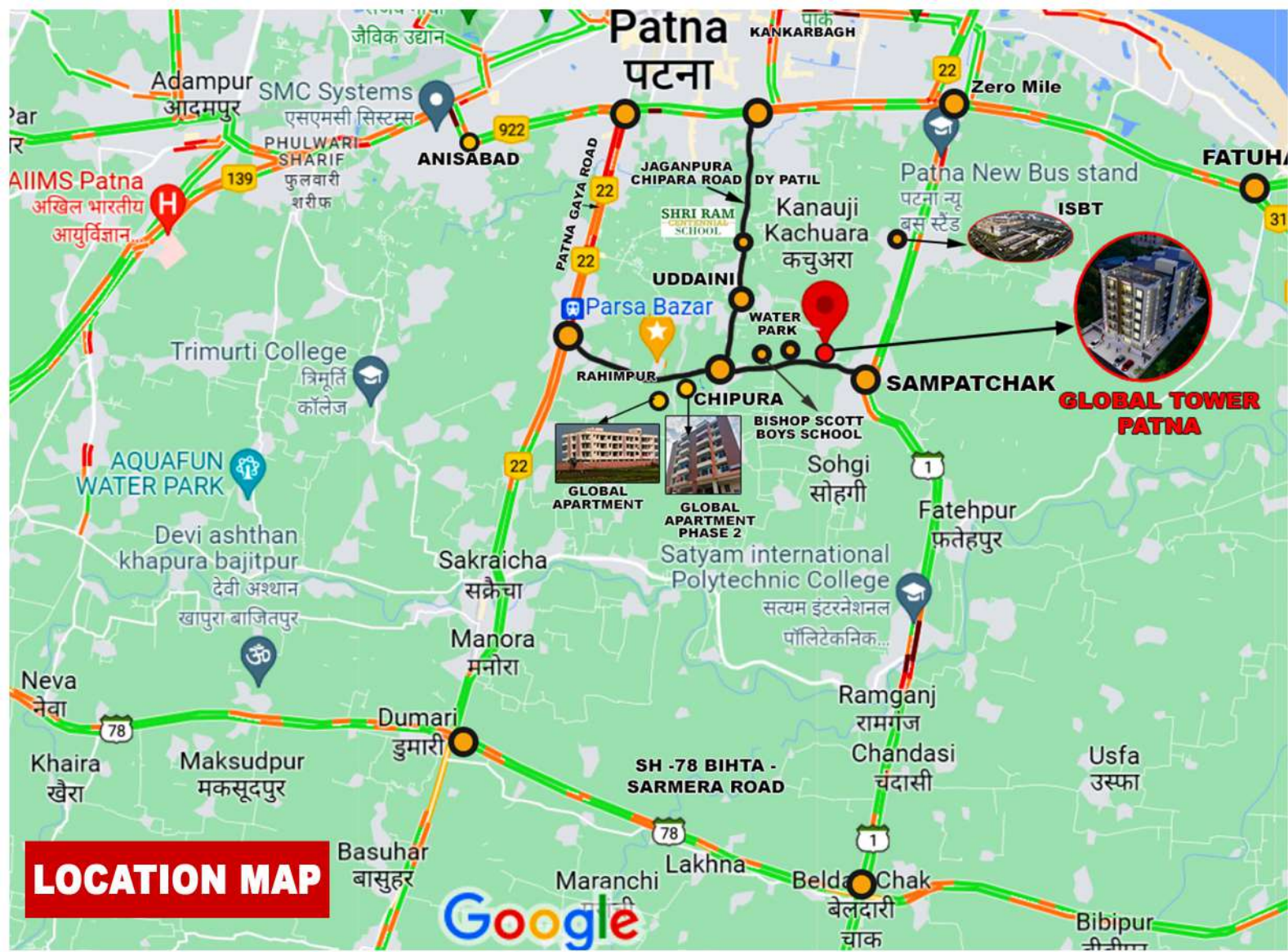
GST No. 10AACCL4301Q1ZR

Builder Reg. No - BR/UDHD/BLDR/23-0233

For Project Details

[www.rera.bihar.gov.in](http://www.rera.bihar.gov.in)





## LAKSHYA BHARTI GLOBAL INFRA CORPORATION LTD.

**Site Address :-**  
**Sona Gopalpur,**  
**Uddaini - Sampatchak Road,**  
**Sampatchak, Patna 800007**

**Registered Office :-**  
**Global Apartment,**  
**Lakshmichak, Chipura Panchayat,**  
**Sampatchak, Patna - 804453**

**Contact us :-**  
**8252020647, 8083555002**



**f Myglobaltower Patna**

**📷 globaltowerpatna**

### DISCLAIMER

This brochure is conceptual and has been prepared based on the inputs provided by the Project Architect. This may vary during execution. The Promoter reserves the right to change, alter, add or delete any of the specifications mentioned herein based on site conditions and construction exigencies without prior permission or notice. The external color schemes and detailing of landscape may vary as may be suggested by the Architect considering the site conditions. The furniture shown in the plans is only for the purpose of illustrating a possible layout and does not form a part of the offering or specifications. All Apartment interior views do not depict the standard wall, color & ceiling finishes and are not part of the offering. Further, the dimensions mentioned do not consider the plastering thickness and there could be marginal variation in carpet areas.